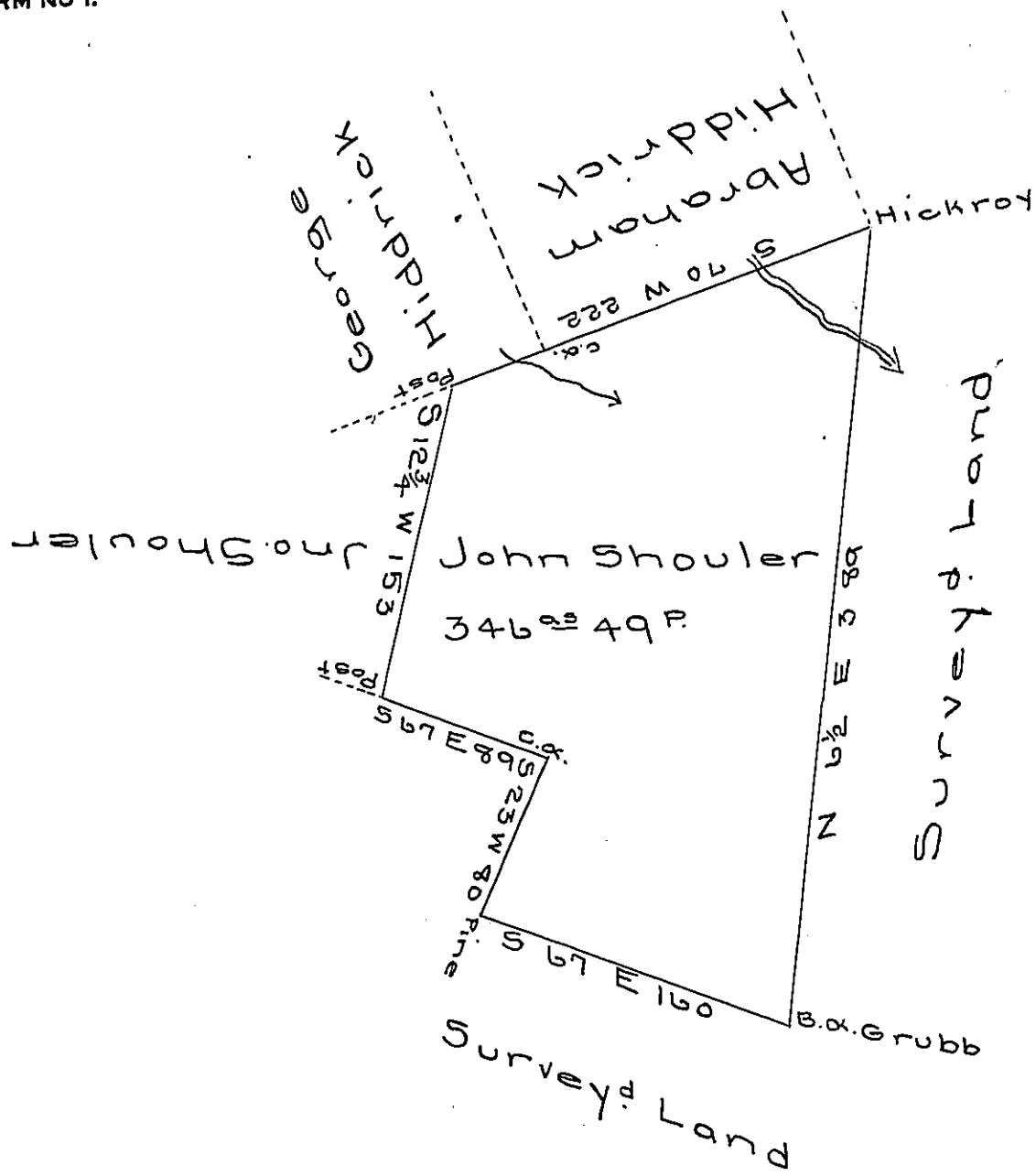


FORM NO 1.



Situate in Muncy township Lycoming County late Northumb^d, surveyd on the 12 day of September 1787 for John Shouler by virtue of his warrant bearing date on the 25 day of July 1787 containing three hundred forty six acres forty nine perches and the usual allowance of six pcent &. taken from the field notes of Joseph J. Wallis late deputy surveyor by me

Henry Donnel. D.S.

To Daniel Brodhead Esq^r }
Surveyor General

IN TESTIMONY that the above is a copy of the original remaining on file in the Department of Internal Affairs of Pennsylvania, made conformably to an Act of Assembly approved the 16th day of February, 1833, I have hereunto set my Hand and caused the Seal of said Department to be affixed at Harrisburg, this eighth day of March 1907.

James B. [Signature]
Secretary of Internal Affairs.